

FUJITSU

# fi-6010N Network Scanner

iScanner

P3PC-2382-01EN

Getting Started

Instructions  
préliminaires

Los Geht's

Avvio Rapido

Comenzando

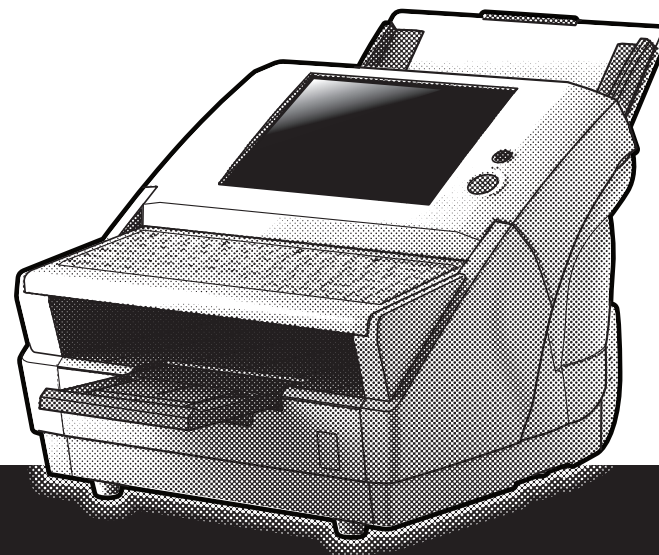
Руководство по  
началу работы

Instruções básicas

Başlarken

시작 안내서

入門指南



# Contents

---

<b>Introduction</b> .....	<b>iii</b>
■ <b>Manuals</b> .....	<b>iii</b>
■ <b>Regulatory Information</b> .....	<b>iii</b>
■ <b>Note of Liability</b> .....	<b>iv</b>
■ <b>Trademarks</b> .....	<b>iv</b>
■ <b>Important Notes</b> .....	<b>v</b>
■ <b>Safety Precautions</b> .....	<b>vi</b>
<b>Chapter 1 Scanner Features</b> .....	<b>1</b>
1.1 <b>Scanner Features</b> .....	<b>1</b>
1.2 <b>Logging In</b> .....	<b>2</b>
1.3 <b>From Arrival through Operation</b> .....	<b>2</b>
1.4 <b>Checking the Contents of the Scanner Package</b> .....	<b>2</b>
1.5 <b>Names and Functions of Parts</b> .....	<b>3</b>
<b>Chapter 2 Setting up the Scanner</b> .....	<b>4</b>
2.1 <b>Space Requirements</b> .....	<b>4</b>
2.2 <b>Installing the Scanner</b> .....	<b>4</b>
2.3 <b>Connecting the Cables</b> .....	<b>4</b>
2.4 <b>Attaching the Keyboard Cover</b> .....	<b>5</b>
<b>Chapter 3 Setting up for Network Use</b> .....	<b>6</b>
3.1 <b>Logging in</b> .....	<b>6</b>
3.2 <b>Changing the Administrator Password</b> .....	<b>7</b>

3.3 <b>Setting the Scanner Name</b> .....	<b>7</b>
3.4 <b>Setting the Region/Timezone</b> .....	<b>8</b>
3.5 <b>Setting the IP Address/DHCP</b> .....	<b>8</b>
3.6 <b>Setting the Admin Network</b> .....	<b>9</b>
3.7 <b>Setting the DNS Server</b> .....	<b>10</b>
3.8 <b>Setting the WINS Server</b> .....	<b>10</b>
3.9 <b>Checking the Network Connection</b> .....	<b>11</b>
3.10 <b>Restarting the System</b> .....	<b>11</b>
<b>Chapter 4 Installing the Admin Tool</b> .....	<b>12</b>
<b>Chapter 5 Downloading the Manual</b> .....	<b>14</b>
<b>Chapter 6 Performing a Scan Test</b> .....	<b>15</b>
<b>Appendix A Calibrating the Touch Panel</b> .....	<b>18</b>
<b>Appendix B Scanner Care</b> .....	<b>19</b>
<b>Appendix C Replacing Parts</b> .....	<b>21</b>
<b>Appendix D Network Connection Troubleshooting</b> .....	<b>23</b>
<b>Appendix E Troubleshooting</b> .....	<b>27</b>
<b>Copyright</b> .....	<b>29</b>

# Introduction

Thank you for purchasing the fi-6010N Network Scanner.

This easy-to-operate network scanner is used to scan documents for further use.

## ■ Manuals

The following manuals are prepared for the scanner. Read them as needed.

Manual	Description
fi-6010N Network Scanner Getting Started (This Manual) (paper)	Provides useful and detailed information on setting up, connecting, and caring for your scanner. Read this manual first.
fi-6010N Network Scanner Operator's Guide (PDF)	Contains further information about scanner settings, scanner administration, and scanner operations, and may be used as a general reference. To read the manual, download it from the scanner. For more details about how to download the manual, refer to "Chapter 5 Downloading the Manual" (page 14). In this guide, it is indicated as "Operator's Guide".

## ■ Regulatory Information

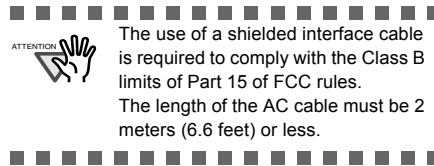
### FCC Declaration

This equipment has been tested and found to comply with the limits for a Class B digital device, pursuant to Part 15 of the FCC Rules. These limits are designed to provide reasonable protection against harmful interference in a residential installation. This equipment generates, uses, and can radiate radio frequency energy and, if not installed and used in accordance with the instruction manual, may cause harmful interference to radio communications. However, there is no guarantee that interference will not occur in a particular installation. If this equipment does cause harmful interference to radio or television reception, which can be determined by turning the equipment off and on, the user is

encouraged to try to correct the interference by one or more of the following measures:

- Reorient or relocate the receiving antenna.
- Increase the separation between the equipment and receiver.
- Connect the equipment into an outlet on a circuit different from that to which the receiver is located.
- Consult your dealer or an experienced radio/TV technician.

**FCC warning:** Changes or modifications not expressly approved by the party responsible for compliance could void the user's authority to operate the equipment.



### Canadian DOC Regulations

This digital apparatus does not exceed the Class B limit for radio noise emissions from digital apparatus set out in the Radio interference Regulations of the Canadian Department of Communications. This Class B digital apparatus complies with Canadian ICES-003.

Le présent appareil numérique n'émet pas de parasites radioélectriques dépassant les limites applicables aux appareils numériques de la classe B et prescrites dans le Règlement sur le brouillage radioélectrique dictées par le Ministère des Communications du Canada. Cet appareil numérique de la classe B est conforme à la norme NMB-003 du Canada.

### Bescheinigung des Herstellers / Importeurs

Für den fi-6010N wird folgendes bescheinigt:

- In Übereinstimmung mit den Bestimmungen der EN45014(CE) funkenstört
- Maschinenlärminformationsverordnung 3. GPSGV: Der höchste Schalldruckpegel beträgt 70 dB (A) oder weniger, gemäß EN ISO 7779.

## ■ Note of Liability

BEFORE USING THIS PRODUCT, PLEASE READ THIS MANUAL CAREFULLY. IF THIS PRODUCT IS NOT USED CORRECTLY, UNEXPECTED INJURY CAN OCCUR TO USERS OR BYSTANDERS.

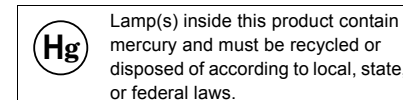
Keep this manual in a safe place so that it can be easily referred to during use of this product.

While all efforts have been made to ensure the accuracy of all information in this manual, PFU assumes no liability to any party for any damage caused by errors or omissions or by statements of any kind in this manual, its updates or supplements, whether such errors are omissions or statements resulting from negligence, accidents, or any other cause. PFU further assumes no liability arising from the application or use of any product or system described herein; nor any liability for incidental or consequential damages arising from the use of this manual. PFU disclaims all warranties regarding the information contained herein, whether expressed, implied, or statutory.

### Use in High-safety Applications

This product has been designed and manufactured on the assumption that it will be used in office, personal, domestic, regular industrial, and general-purpose applications. It has not been designed and manufactured for use in applications (simply called "high-safety applications" from here on) that directly involve danger to life and health when a high degree of safety is required, for example, in the control of nuclear reactions at nuclear power facilities, automatic flight control of aircraft, air traffic control, operation control in mass-transport systems, medical equipment for sustaining life, and missile firing control in weapons systems, and when provisionally the safety in question is not ensured. The user should use this product with adopting measures for ensuring safety in such high-safety applications. PFU LIMITED assumes no liability whatsoever for damages arising from use of this product by the user in high-safety applications, and for any claims or compensation for damages by the user or a third party.

### About the Use of Mercury



To avoid unexpected injuries:

- Do not lick or consume the substance contained in the lamp.

- Do not breathe the chemical liquid contained in the scanner lamps.
- Do not incinerate, crush, or shred the lamps or scanner parts.

### LCD Peculiarities

- The LCD backlight is a fluorescent tube that contains some mercury.
- Be aware that neither of the following is considered a fault.
  - Despite the advanced technologies used to produce the devices TFT color LCD's, the large number of pixels involved means that an occasional (always-on) bright dot or (always-off) dark dot may be visible.
  - The characteristics of the LCD mean that there may be some variation in hue and intensity of colors across the screen.

### Replacing Batteries

This product has a battery (CMOS RAM battery) on board to retain data such as

- Warning
  - Do not replace the battery yourself, as there is a risk of explosion if the wrong type is used. Please contact your maintenance engineer in charge when the battery runs low.
  - Do not touch the battery. Never install or remove the battery by yourself. Doing so may cause electric shock or static electricity which can damage the device.

### About Maintenance

The user must not perform repairs on this scanner. Contact your FUJITSU scanner dealer or an authorized FUJITSU scanner service provider for repairs to this product.

## ■ Trademarks

Microsoft, Windows, and Windows Vista are registered trademarks of Microsoft Corporation in the United States and/or other countries. Adobe, the Adobe logo, and Acrobat are either registered trademarks of Adobe Systems Incorporated in the United States and/or other countries.

ABBYY™ FineReader™ 7.x Engine © ABBYY Software House 2005.

OCR by ABBYY Software House. All rights reserved.  
 ABBYY, FineReader are trademarks of ABBYY Software House.  
 Other product names are the trademarks or registered trademarks of the respective companies.

## How Trademarks are Indicated in This Manual

References to operating systems (OS) and applications are indicated as follows:

Windows	Microsoft® Windows® operating system
Windows® XP	Microsoft® Windows® XP Professional operating system, Microsoft® Windows® XP Home Edition operating system
Windows Vista®	Microsoft® Windows Vista® Home Basic operating system, Microsoft® Windows Vista® Home Premium operating system, Microsoft® Windows Vista® Business operating system, Microsoft® Windows Vista® Enterprise operating system, Microsoft® Windows Vista® Ultimate operating system
Windows Server® 2003	Microsoft® Windows Server® 2003, Standard Edition Microsoft® Windows Server® 2003, Enterprise Edition Microsoft® Windows Server® 2003, Datacenter Edition
Windows Server® 2008	Microsoft® Windows Server® 2008 Standard Microsoft® Windows Server® 2008 Enterprise Microsoft® Windows Server® 2008 Datacenter
.NET Framework	Microsoft® .NET Framework

All the descriptions in this manual assume the usage of Adobe® Acrobat® bundled with this product. However, Adobe Acrobat may be upgraded without notice. If the descriptions differ from the screens actually displayed, refer to the Acrobat's "Help".

## Manufacturer

PFU LIMITED  
 International Sales Dept., Imaging Business Division, Products Group  
 Solid Square East Tower, 580 Horikawa-cho, Saiwai-ku, Kawasaki-shi Kanagawa 212-8563, Japan  
 Phone: (81-44) 540-4538

All Rights Reserved, Copyright© PFU LIMITED 2008.

## Important Notes

### Warning Indications Used in This Manual



This indication alerts operators to an operation that, if not strictly observed, may result in severe injury or death.



This indication alerts operators to an operation that, if not strictly observed, may result in safety hazards to personnel or damage to equipment.

### Symbols Used in This Manual



This symbol alerts operators to particularly important information. Be sure to read this information.



This symbol alerts operators to helpful advice regarding operation.



A TRIANGLE symbol indicates that special care and attention is required. The drawing inside the triangle shows the specific caution.



A CIRCLE with a diagonal line inside shows action which users may not perform. The drawing inside or under the circle shows the specific action that is not allowed.

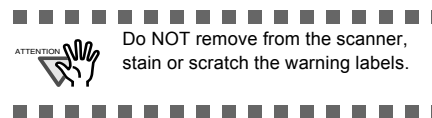


Outline characters on a colored background show instructions users should follow. It may also include the drawing that shows the specific instruction.

## Warning Label



The glass scanner windows inside the ADF can become hot when the scanner is used. Be careful not to touch the surface of the glass scanner windows.



Do NOT remove from the scanner, stain or scratch the warning labels.

## Screen Examples in This Manual

The screen examples in this manual are subject to change without notice in the interest of product improvement. If the actual displayed screen differs from the screen examples in this manual, operate by following the actual displayed screen while referring to the User's Manual of the scanner application you are using. The screen examples shown in this manual are Windows Vista® windows.

## Safety Precautions



### Do not damage the AC cable.



A damaged AC cable may cause fire or electric shock. Do not place heavy objects on AC cables, or pull, bend, twist, heat, damage or modify AC cables. Do not use damaged AC cables or power plugs, or install any cables or power plugs to loose wall sockets.

### Use only specified AC cables and connector cables.



Use only specified AC cables and connector cables. Failure to use the correct cables might cause electric shock and/or equipment failure. Please do not use the AC cable provided with this scanner for other devices, since this might cause equipment failure and other troubles or an electric shock.

### Use this scanner only at the indicated power voltage. Do not connect to multiple-power strips.



Use this scanner only at the indicated power voltage and current. Improper power voltage and current might cause fire or electric shock. Do not connect to multiple-power strips.

### Do not touch the AC cable with wet hands.



Do not touch the power plug with wet hands. Doing so might cause electric shock.

### Wipe any dust from the power plug.



Wipe off any dust from metal parts on the power plug or metal fittings with a soft, dry cloth. Accumulated dust might cause fire or electric shock.

### Do not install the device in locations that has oil smoke, steam, humidity, and dust.



Do not install the scanner in locations subject to oil smoke, steam, humidity, and dust. Doing so might cause a fire or electric shock.

### Turn the scanner OFF if it is damaged.



If the scanner is damaged for any reason, turn the scanner off and unplug the power cable. Contact your FUJITSU scanner dealer or an authorized FUJITSU scanner service provider.

### Do not put liquids inside the scanner.



Do not insert or drop metal objects in to the scanner. Do not scan wet documents or documents with paper clips or staples. Do not splash or allow the scanner to get wet.



If foreign objects (water, small metal objects, liquids, etc.) get inside the scanner, immediately turn off the scanner and disconnect the power plug from the power outlet. Then, contact your FUJITSU scanner dealer or an authorized FUJITSU scanner service provider. Pay particular attention to this warning in households where there are small children.



### Do not touch the inside of the scanner unless necessary.



Do not take apart or modify the scanner. The inside of the scanner contains high-voltage components. Touching these components might cause electric shock or fire.

### Do not use the scanner if you smell a strange odor.



If you detect heat coming from the device or detect other problems such as smoke, strange smells or noises, immediately turn off the scanner and then disconnect its power plug. Make sure that any smoke coming from it has stopped, before contacting your FUJITSU scanner dealer or an authorized FUJITSU scanner service provider.

### Do not use aerosol sprays near the scanner.



Do not use any aerosol sprays or alcohol based sprays to clean the scanner. Dust blown up by strong air from the spray may enter the inside of the scanner. This may cause the scanner to fail or malfunction. Sparks, caused by static electricity, generated when blowing off dust and dirt from the outside of the scanner may cause a fire.

### Do not place the scanner within the reach of small children.



To avoid injuries, do not place the scanner in an area where small children may be able to reach.

### Do not touch the heated section for a long time.



Do not touch the heated section such as the bottom of the scanner for a long time. Doing so may cause a low-temperature burn on your skin.

### Do not cover the scanner with something during its operation.

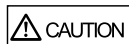


Do not use the scanner while covered with a blanket, etc. Doing so may raise the temperature inside and cause a fire.

### Do not use the scanner where it gets wet.



Do not use the scanner at a place such as a bathroom, shower room, or swimming pool where it may easily get wet. Doing so might cause electric shock or fire.



### Do not install the scanner on unstable surfaces.



Make sure that the scanner is installed on a flat, level surface and that none of its parts extend beyond the surface top, such as a desk or table. Do not install the scanner on unstable surfaces. Install the scanner on a level surface that is free of vibration to prevent it from falling. Install the scanner on a strong surface that will support the weight of the scanner and other devices.



### Do not block the ventilation ports.



Do not block the ventilation ports. Blocking the ventilation ports generates heat inside of scanner, which may result in fire or scanner failure.

### Do not place heavy objects or climb on top of the scanner.



Do not place heavy objects on the scanner or use the scanner's surface top to perform other work. Improper installation might cause injuries and equipment failure.

### Firmly insert the power plug.



Firmly insert the power plug as far it can go into the power outlet.

### Avoid any contact when scanner is in use.



Avoid touching any scanner mechanism during scanning since this may cause injuries.

### Do not use the scanner immediately after moving it from a cold place into a warm room.



Do not use the device immediately after moving it from a cold place into a warm room. Condensation may occur, which might lead to scanning errors. Let the device dry about one or two hours before you use it.

### Before moving the scanner, disconnect the power plug from the power outlet.



Do not move the scanner with the power and interface cables connected as this can damage the cables, which can later cause fire, electric shock as well as injury. Before moving the scanner, be sure to disconnect the power plug from the power outlet, and all other data cables. Make sure that the floor is free of any obstructions.

### Protect the scanner from static electricity.



Install the scanner away from strong magnetic fields and other sources of electronic noise. Also, protect the scanner against any static electricity, which can cause the scanner to malfunction.

### Disconnect the power plug from the power outlet when the scanner is not used for a long period of time.



When the scanner is not going to be used for a long period of time, be sure to disconnect the power plug from the power outlet for safety.

### Do not install the scanner in the direct sunlight.



Do not install the scanner under direct sunlight or near heating apparatus. Doing so might cause excessive heat to build up inside the scanner, which can cause scanner trouble or even fire. Install the scanner in a well-ventilated location.

### Handle documents carefully.



When handling documents, be careful not to cut your fingers with them.

### Do not make the scanner wet while carrying it outside.



When carrying the scanner outside while it is raining or snowing, pay special attention so the scanner does not get wet.

### Do not place the scanner in areas, which are subject to high levels of shock or vibration.



Do not place the scanner in areas, which are subject to high levels of shock or vibration. Doing so may cause the scanner to malfunction.

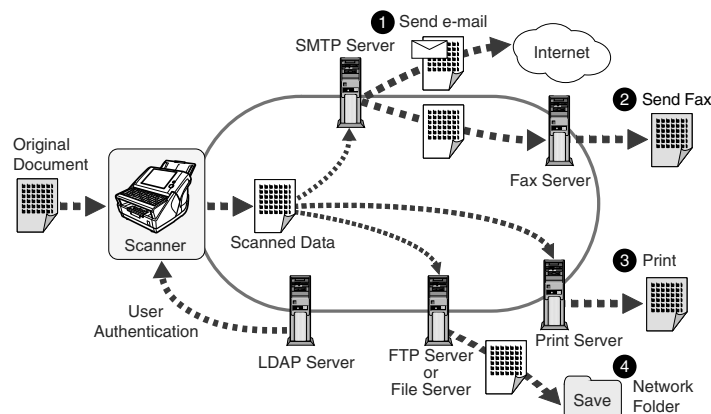
# Chapter 1 Scanner Features

## 1.1 Scanner Features

### ■ Use for scanned documents with ease

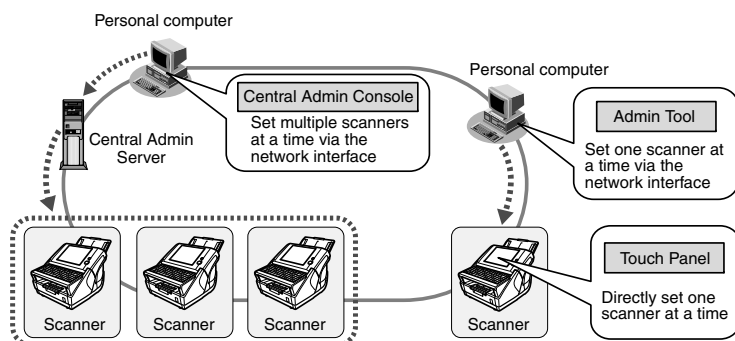
This easy-to-operate network scanner may be used to scan documents for further use:

1. Scanned document files can be sent as an e-mail attachment.
2. Scanned document files can be sent by fax.
3. Scanned document files can be printed on a network printer.
4. Scanned document files can be saved in a network folder.



### ■ Configure and manage with ease

Configuration and management of the scanner can be easily performed via the touch panel, or via the fi Network Scanner Admin Tool (hereinafter referred to as Admin Tool) or the iScanner Central Admin Console (hereinafter referred to as Central Admin Console), installed on a personal computer. For more details how to install, refer to the "Operator's Guide".



### ■ Advanced security measures

The following security functions are provided for the scanner.

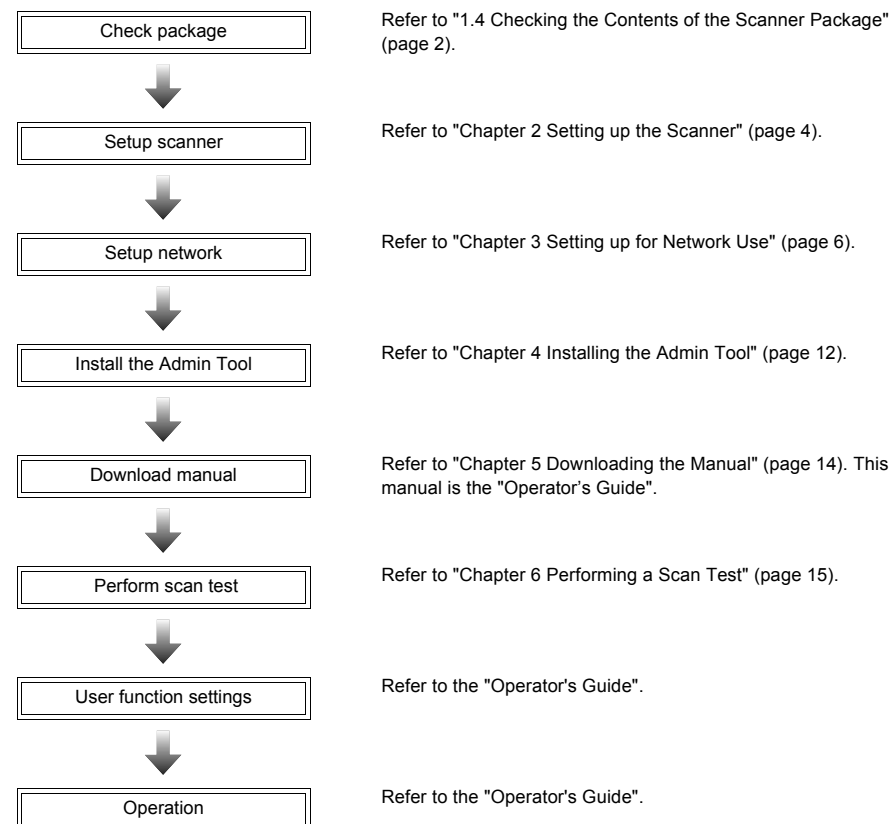
- Login authentication can restrict user access.
- Scans can be converted to password protected PDF files.
- Scanned data is always encrypted in the scanner and deleted after it is sent as an e-mail or by fax, printed, saved in a folder.

## 1.2 Logging In

The scanner functions available after login vary in the following ways for different types of user: For more details, refer to the "Operator's Guide".

- Administrator  
Can setup and manage the scanner.
- Regular User  
Can scan documents and then send, print, or save the resulting data.

## 1.3 From Arrival through Operation



## 1.4 Checking the Contents of the Scanner Package

When you open the scanner package, please handle the main unit and its attachments carefully.

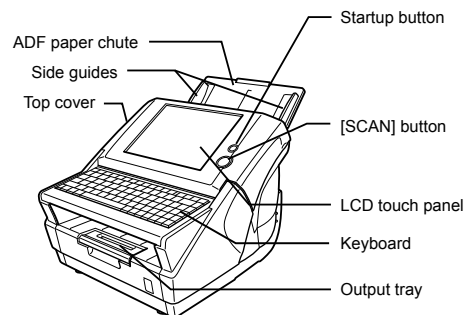
Make sure the scanner package contains all the parts listed in "Checking the Package Contents" that is included in the package box.

If any parts are missing or defective, contact your FUJITSU scanner dealer or an authorized FUJITSU scanner service provider.

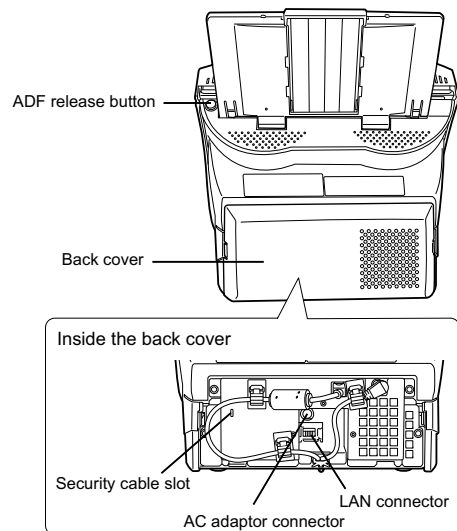
## 1.5 Names and Functions of Parts

This section describes the scanner parts and their functions.

### ■ Front

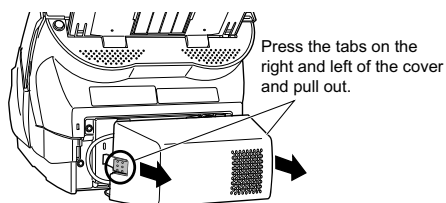
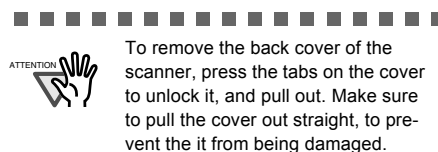
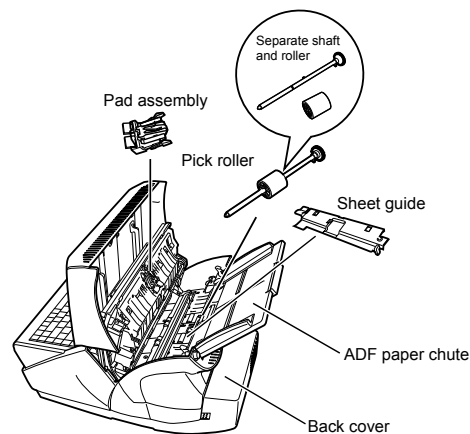


### ■ Rear



### ■ Removable Parts

Parts that can be removed from the scanner are displayed below.



## Chapter 2 Setting up the Scanner

### 2.1 Space Requirements

The following space is required to set up the scanner:

Depth: 700mm (28in)

Width: 400mm (16in)

Height: 500mm (20in)

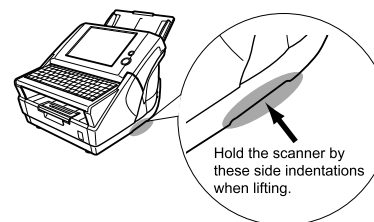
### 2.2 Installing the Scanner



When lifting the scanner, always hold it by the indentations on the bottom of each side to ensure a stable grip.

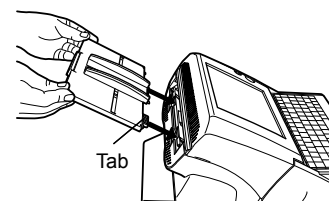


Holding the scanner in any other way may cause it to be dropped or damaged.



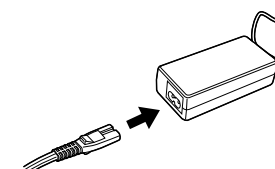
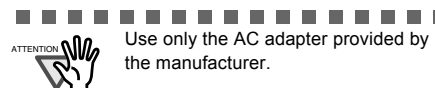
1. Place the scanner at its installation site.
2. Attach the ADF paper chute.

Hold the ADF paper chute and insert its tabs into the corresponding slots in the scanner as shown in the following figure. The side guides of the ADF paper chute should face up.

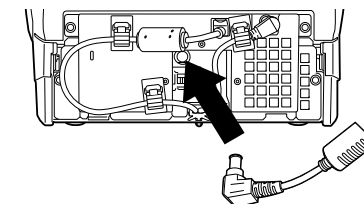


### 2.3 Connecting the Cables

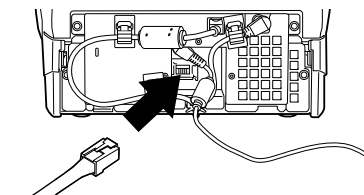
1. Connect the AC cable to the AC adapter.



2. Connect the AC adapter connector to the scanner's DC inlet.

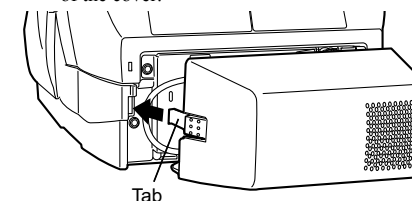


3. Connect the LAN cable to the LAN connector.



4. Attach the back cover.

Attach the cover with the connected AC cable and LAN cable protruding out of the lower part of the cover.



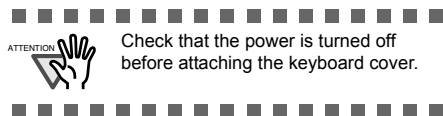
To make sure the cover is properly attached, insert the right and left tabs at the same time.

5. Connect the other end of the LAN cable to the network hub.
6. Insert the AC cable into a power outlet.

⇒ The power is connected but the scanner is not yet ready for operation.

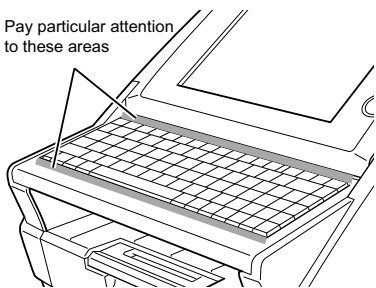
## 2.4 Attaching the Keyboard Cover

The layout of the keyboard may differ according to the language selected for the operating environment. The layout of each keyboard cover is prepared according to language requirements. Take the keyboard cover for the selected language out of its packaging, and attach it to the scanner. This scanner is set up for use with an English (US) keyboard. Therefore, if the scanner is to be used with an English (US) keyboard attaching a keyboard cover is not required.

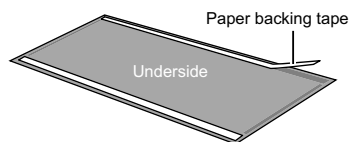


1. Clean the surface of the keyboard.

Pay particular attention to these areas

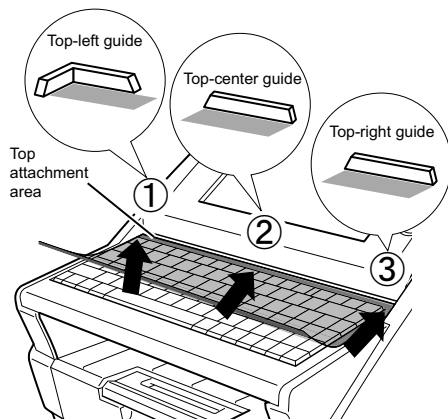


2. Turn the keyboard cover over and remove the paper backing from the top strip of double-sided tape.

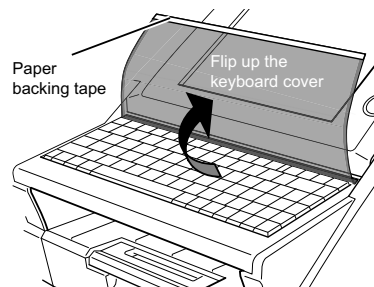


3. Align the top edge of the keyboard cover with the protruding guides, and firmly smooth the double-sided tape down.

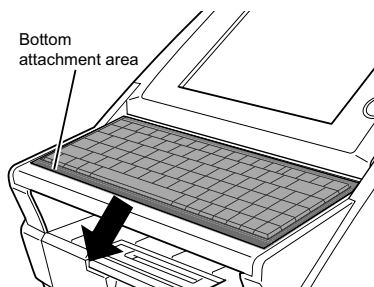
Align and attach the top-left corner first, then the center, and last the top-right corner.



4. Flip up the keyboard cover and remove the paper backing from the bottom strip of double-sided tape.



5. Gently stretch the keyboard cover forward and smooth the double-sided tape down.



Continue setting up the network.

## Chapter 3 Setting up for Network Use

### 3.1 Logging in

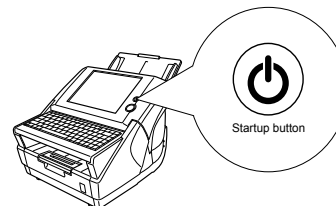


**CAUTION** Do not move or shake the scanner when it is turned on. This can damage the rotating hard disk drive and cause data to be lost.

To set up the network connection, you must login as the administrator. The user name and initial password for the administrator are as follows:

- User Name: admin
- Password: password

1. Press the startup button.



⇒ After the system starts up, the "Language / Keyboard Selection" screen appears.



After turning the power off, wait for at least ten seconds before turning the power back on again.



If touch panel responses seem out of alignment with the positions of objects on the LCD screen, calibrate the screen. For details, refer to "Appendix A Calibrating the Touch Panel" (page 18).

2. Select a language.

Select the desired language for the operating environment. The default language is "English (US Keyboard)".



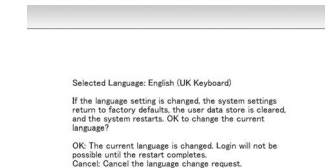
You can select whether or not to display this screen again at the next start up. To display the screen again, for "Show this message at next start up?", press the [Yes] button. To not display this screen at next start up, press the [No] button. To change the setting back to displaying this screen at the next start up, login as the administrator and for "Show the "Language/Keyboard Selection" screen at next start up?", press the [Yes] button on the "Language/Keyboard Selection" screen.

3. Press the [OK] button.

⇒ The "Login" screen appears.



If the language is changed in Step 2, the following screen appears. The message is displayed in the selected language.

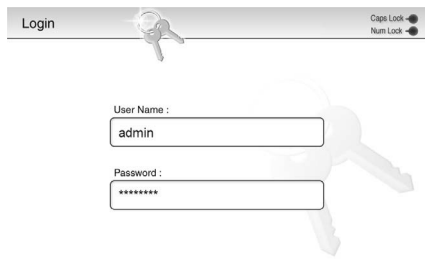


Pressing the [OK] button restarts the scanner, and the "Login" screen.

4. Enter the user name.

User name is case sensitive. Enter "admin" here.



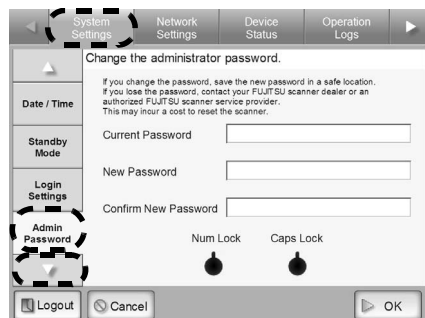


5. Enter the password.  
Password is case sensitive.  
Enter "password" here.
6. Press the [Login] button.  
⇒ If the administrator name and password are valid, the "System Settings" screen appears.

### 3.2 Changing the Administrator Password

**ATTENTION** If you change the password, save the new password in a safe location. If you lose the password, contact your FUJITSU scanner dealer or an authorized FUJITSU scanner service provider. This may incur a cost to reset the scanner.

1. Select the [System Settings] tab on the top menu.
2. Press the [▽] button on the left side menu.  
⇒ Scroll the left side menu down until the [Admin Password] tab appears.
3. Select the [Admin Password] tab on the left side menu.



⇒ The "Admin Password" screen appears.

4. Enter the "Current Password", "New Password", and "Confirm New Password".  
Passwords must be between 7 and 127 characters long.  
Alphanumeric characters (case sensitive) and symbols may be entered.
5. Press the [OK] button.  
⇒ The new admin password is set.

### 3.3 Setting the Scanner Name

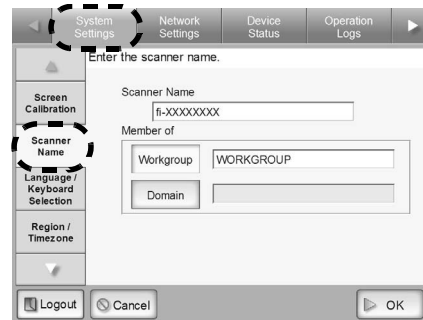
A scanner name may be set to provide a network alias for the device.



**ATTENTION** Do not use a name that is already being used in the network. Name duplication will cause a network connection error.



1. Select the [System Settings] tab on the top menu.
2. Select the [Scanner Name] tab on the left side menu.



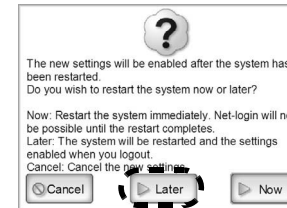
⇒ The "Scanner Name" screen appears.

3. Enter a scanner name.  
Scanner names may be up to 15 characters long. Use only alphanumeric characters (case sensitive) and hyphens. Scanner names cannot consist of numerical characters only. A hyphen cannot be used as the first character of a scanner name.

**HINT** The scanner can be setup to be a workgroup or domain member.



4. Press the [OK] button.  
⇒ The restart confirmation screen appears.
5. Press the [Later] button.



⇒ The current scanner name, or changed scanner name after next restart, is displayed.



**HINT** If the scanner name is the same as one already in use, network communication problems will occur. In this case, try the following steps:

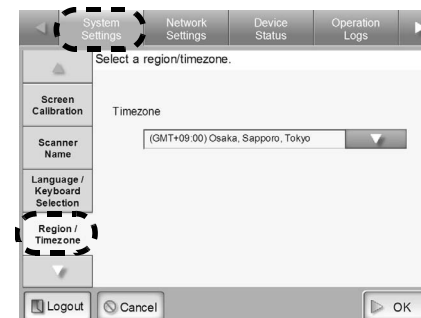
1. Disconnect the LAN cable, press the [Shutdown] button on the touch panel, and turn the scanner off.
2. Reboot the scanner with the LAN cable disconnected, and enter a non-duplicate scanner name.
3. Reboot the scanner again.
4. Re-connect the LAN cable to the scanner.

Restart may be performed after all necessary settings have been completed.

Continue with the Region/Timezone settings.

### 3.4 Setting the Region/Timezone

1. Select the [System Settings] tab on the top menu.
2. Select the [Region/Timezone] tab on the left side menu.



⇒ The "Region/Timezone" screen appears.

3. Press the [List] button for the "Timezone" input field.  
The default timezone is "(GMT+09:00) Osaka, Sapporo, Tokyo".  
⇒ A list of timezones appears.
4. Select a timezone.



5. Select whether "Daylight Savings Time" should be on or off.  
This option is not shown for timezones where daylight savings time is not used.
6. Press the [OK] button.  
⇒ The Region/Timezone is set.

Continue with IP address/DHCP settings.

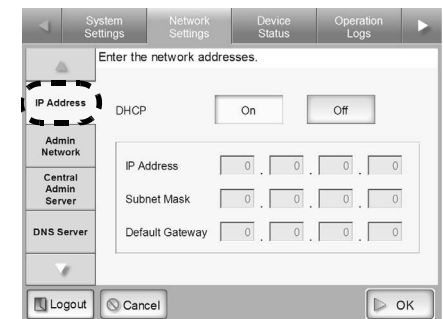
### 3.5 Setting the IP Address/DHCP

An IP address must be set in order to connect the scanner to a network.

**ATTENTION** Do not use an IP address that already exists in the network. IP address duplication will cause an error during setup.



1. Select the [Network Settings] tab on the top menu.
2. Select the [IP Address] tab on the left side menu.

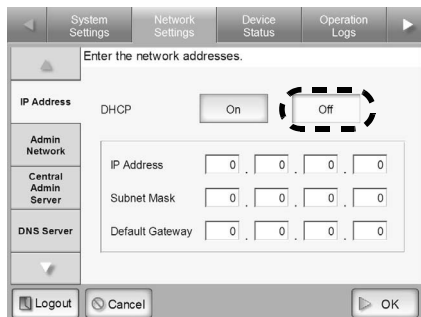


⇒ The IP address/DHCP screen appears.

- Set the scanner's IP address. This may be done automatically, by pressing the DHCP [On] button.

The IP address may also be set manually, by pressing the DHCP [Off] button and entering the following numerical addresses:

- IP Address
- Subnet Mask
- Default Gateway



- Press the [OK] button.

⇒ The information entered is set.



If the IP address is the same as one already in use, network communication problems will occur. In this case, try the following steps:

- Disconnect the LAN cable, press the [Shutdown] button on the touch panel, and turn the scanner off.
- Reboot the scanner with the LAN cable still disconnected, and enter a non-duplicate IP address.
- Re-connect the LAN cable to the scanner.

When DHCP is set to "On", the following settings are assigned by the DHCP:

- IP Address
- Subnet Mask
- Default Gateway
- DNS Server
- WINS Server
- Domain Suffix

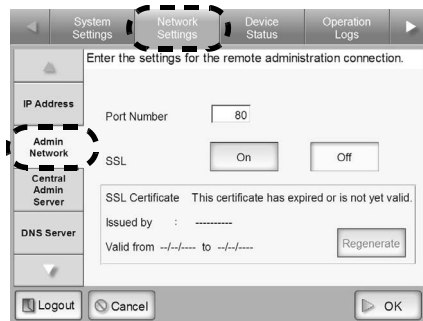
Even if DNS or WINS server is set, priority is given to the scanner settings over the DHCP settings.

Continue with the connection settings.

### 3.6 Setting the Admin Network

Set the network settings for connecting to a scanner from the Admin Tool or Central Admin Server.

- Select the [Network Settings] tab on the top menu.
- Select the [Admin Network] tab on the left side menu.



⇒ The "Admin Network" screen appears.

- Enter a port number from 1 to 65535, to be used by the scanner to communicate with the Admin Tool or Central Admin server.

The default setting is 80.



- Port numbers 135, 139, 445, and numbers from 1025 to 1124, cannot be specified as they are already reserved in the scanner.
- If port numbers other than HTTP:80, HTTPS:443 are to be specified, it is recommended that numbers over 5000 are used. If a port number lower than 5000 is specified, verify the Admin Tool connectivity with the port number first.

- Select whether or not to enable SSL.

Select the [On] button enables SSL. If SSL is enabled, press the [Regenerate] button to create another SSL Certificate. When a new SSL Certificate is created, the contents of the certificate are changed. The contents of the SSL Certificate are as follows.

- Issued by  
Displays the SSL Certificate issuer.
- Valid from  
Displays the SSL Certificate expiration date. The expiration date is five years from the date on which the certificate was created. This is shown in date form.

Selecting the [Off] button disables SSL.

- Press the [OK] button.

⇒ The communication settings are set.



The following settings combinations are not possible.

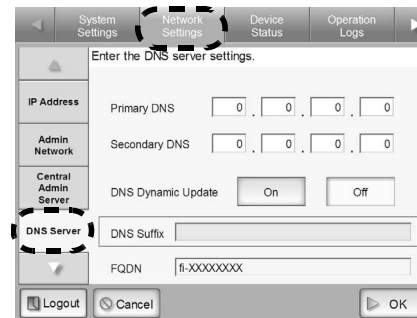
- Port Number "80" and SSL "On"
- Port Number "443" and SSL "Off"

Continue with the DNS settings.

### 3.7 Setting the DNS Server

A primary DNS and secondary DNS can be set.

- Select the [Network Settings] tab on the top menu.
- Select the [DNS Server] tab on the left side menu.



⇒ The "DNS Server" screen appears.

- Enter the following numerical addresses:

- Primary DNS
  - Secondary DNS
- If a DNS server setting is not required, enter "0.0.0.0".



A Secondary DNS cannot be set without a Primary DNS.



DNS Dynamic Update and DNS Suffix can also be set. The current FQDN is shown for the FQDN. However, if the scanner is not connected to the network, the FQDN may not be displayed correctly.

- Press the [OK] button.

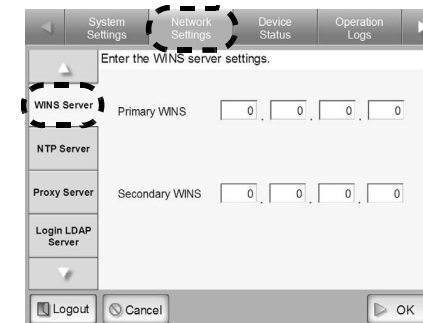
⇒ The information entered is set.

Continue with the WINS settings.

### 3.8 Setting the WINS Server

A primary WINS and secondary WINS can be set.

- Select the [Network Settings] tab on the top menu.
- Press the [▽] button on the left side menu.  
⇒ Scroll the left side menu down until the [WINS Server] tab appears.
- Select the [WINS Server] tab on the left side menu.



⇒ The "WINS Server" screen appears.

4. Enter the following numerical addresses:

- Primary WINS
- Secondary WINS  
If a WINS server setting is not required, enter "0.0.0.0".



A Secondary WINS cannot be set without a Primary WINS.

5. Press the [OK] button.

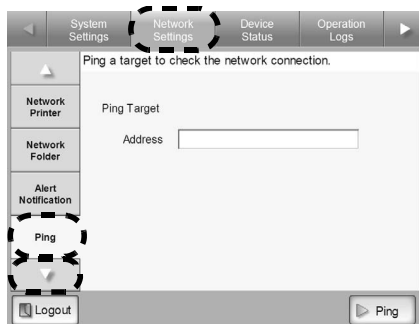
⇒ The information entered is set.

Next, check the network connection.

### 3.9 Checking the Network Connection

The network connection may be checked by performing a ping test.

1. Select the [Network Settings] tab on the top menu.
2. Press the [▽] button on the left side menu.  
⇒ Scroll the left side menu down until the [Ping] tab appears.
3. Select the [Ping] tab on the left side menu.



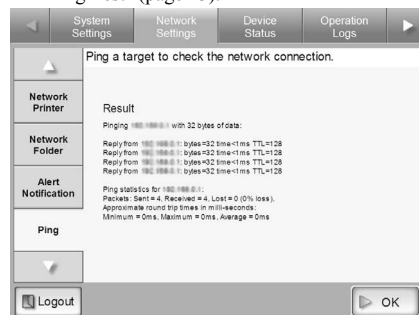
⇒ The "Ping" screen appears.

4. Enter the IP address, host name, or FQDN for the server to be used to check the network connection.

- For an IP address  
The following format should be used  
xxx.xxx.xxx.xxx (xxx is a value from 0 to 255).
- For a host name or FQDN  
Up to 255 characters may be used.

5. Press the [Ping] button.

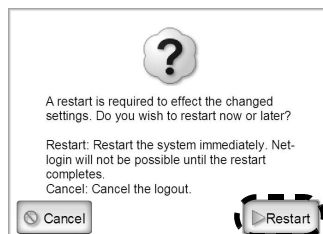
⇒ A ping test is performed and the results are displayed. If the result shows "Lost=0 (0% loss)", the network connection is functioning normally. For any other result, refer to "Checking Basic Network Operation with a Ping Test" (page 23).



After performing all settings, restart the system.

### 3.10 Restarting the System

1. Press the [Logout] button.  
⇒ The restart confirmation screen appears.
2. Press the [Restart] button.



⇒ The scanner restarts, and the "Login" screen appears.

Next, install the Admin Tool.

## Chapter 4 Installing the Admin Tool

As well as operating via the touch panel, the administrator can configure scanner settings via the network interface. In order to do this, the Admin Tool, or Central Admin Console, must first be installed on a personal computer connected to the network.

The Admin Tool can set one scanner at a time. The Central Admin Console can set multiple scanners at a time. For more details about the Central Admin Console, refer to the "Operator's Guide".

This chapter provides a description of the Admin Tool. The information and procedure for installing the Admin Tool are as follows.

Software	<ul style="list-style-type: none"> <li>• Operating system           <ul style="list-style-type: none"> <li>• Windows® XP SP2 or later</li> <li>• Windows Vista®</li> <li>• Windows Server® 2003 SP2 or later</li> <li>• Windows Server® 2008</li> </ul> </li> <li>• .NET Framework 2.0 SP1 or later, or .NET Framework 3.0 SP1 or later (*1)</li> <li>• Microsoft® Internet Explorer 6 SP2 or later (*2)</li> </ul>
Hardware	<ul style="list-style-type: none"> <li>• 32 MB or more of free memory space</li> <li>• 64 MB or more of free disk space</li> <li>• Any personal computer which runs the supported software</li> <li>• XGA monitor or better</li> <li>• LAN cable</li> <li>• Pointing device (e.g. mouse)</li> </ul>

\*1: When installing the Admin Tool, confirm that .NET Framework is installed. If not already installed, a message will appear telling you to install .NET Framework from the Microsoft Web site. When installing .NET Framework, at least 280MB of additional free disk space is required.

\*2: Confirm that the latest security patch has been applied. If the latest patch has not been applied, downloading operations (such as manual download) may not be possible. For Windows® XP, "KB933566" must be applied to Microsoft® Internet Explorer.

1. Specify the scanner name as a URL in the web browser's location bar.

According to the settings from "3.6 Setting the Admin Network" (page 9), the specified URL is as follows:

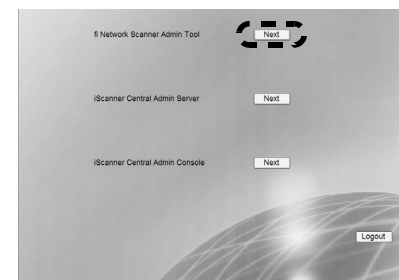
- SSL is [Off], no port number change  
http://scanner\_name or IP\_address/
- SSL is [Off], port number change  
http://scanner\_name or IP\_address:port\_number/  
For port\_number, number enter the changed port number

- SSL is [On], no port number change  
https://scanner\_name or IP\_address/
  - SSL is [On], port number change  
https://scanner\_name or IP\_address:port\_number/  
For port\_number, enter the changed port number  
For SSL, the "Security Alert" window is displayed when connecting. Press the [Yes] button on the "Security Alert" window.  
⇒ The "Login" screen appears.
2. Enter a "User Name" and "Password", and press the "Login" button.



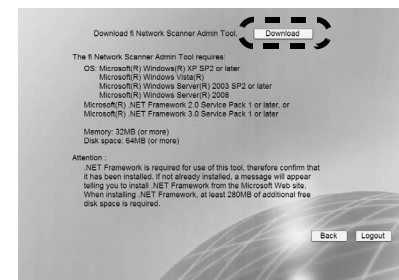
⇒ The "Download" screen appears.

3. Press the [Next] button for the fi Network Scanner Admin Tool download.



⇒ The fi Network Scanner Admin Tool download screen appears.

4. Press the [Download] button.





- Downloading is not possible while an administrator or user operation is being processed.
- Do not close the Web browser or logout until installation is complete.

⇒ The "File Download - Security Warning" screen appears.

5. Press the [Run] button.



⇒ The fi Network Scanner Admin Tool Setup Wizard appears.



If .NET Framework is not installed, download and install ".NET Framework Redistributable Package" from the Microsoft Website. After installing the package, try again from Step 1.

6. Press the [Next] button.



⇒ The "Select Installation Folder" window appears.

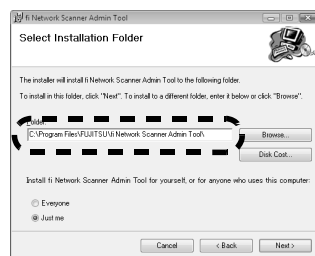
7. Specify an installation folder for the Admin Tool.

To select a different folder, press the [Browse] button.

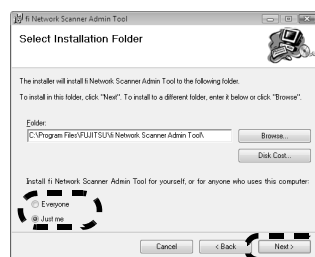
To check the free space available for the currently selected folder, press the [Disk Cost] button.



Installation will fail if the length of any installation path (folder path plus installation file name) exceeds 259 characters. Select an installation folder that respects this limit.



8. Select the target user(s), and press the [Next] button.



⇒ Follow the prompts of the install wizard windows until a "fi Network Scanner Admin Tool has been successfully installed" message indicates that the installation has completed. Press the [Close] button.

⇒ When the installation is completed, logout of the scanner, and close the Web browser.

⇒ The Admin Tool should now be usable.

Click the [Start] button, select the [All Programs] - [fi-scanner V2.1] sub-menu, and then click on the [fi Network Scanner Admin Tool].

For more details about configuring settings with, or uninstalling the Admin Tool, refer to the "Operator's Guide".

Next, download the "Operator's Guide".

## Chapter 5 Downloading the Manual

In addition to this "Getting Started" guide, a "Operator's Guide" is also available.

The "Operator's Guide" contains information about scanner settings, scanner administration, and scanner operations.

Consult this manual when using the scanner.

The "Operator's Guide" is a PDF file, and can be viewed with Adobe® Reader® (\*).

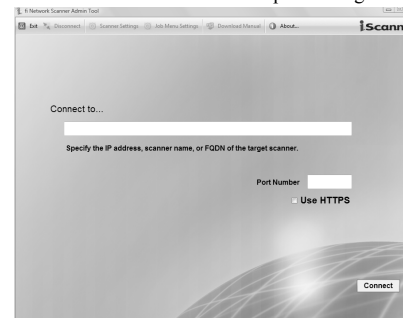
\* Adobe® Reader® can be downloaded from the following site.

<http://www.adobe.com/>

Login as the administrator via the network interface to download the "Operator's Guide".

The download procedure is as follows:

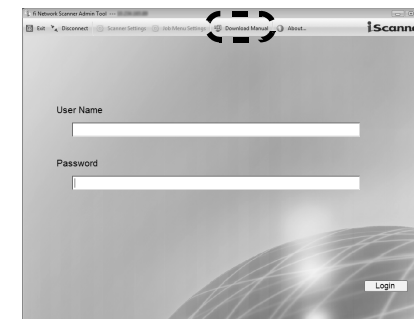
1. From the [Start] menu, point to [All Programs] - [fi-scanner V2.1], and then click [fi Network Scanner Admin Tool].  
⇒ The Admin Tool is started.
2. Specify the "Connect to" (of the scanner).  
Enter the IP address, scanner name, or FQDN name for the scanner to be setup or managed.



- If the port number was changed in "3.6 Setting the Admin Network" (page 9) enter the changed port number for "Port Number".
- When trying to connect with a port number other than the specified number, it will take up to 20 seconds before a connection error occurs.
- To use SSL, select the [Use HTTPS] checkbox.
- If the Admin Tool is started while there is insufficient free memory, a script error may occur. Try again after ensuring that there is enough free memory.

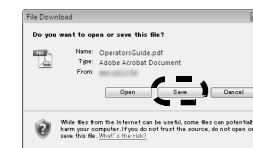
3. Press the [Connect] button.  
⇒ The "Login" screen appears.

4. Press the [Download Manual] button.



⇒ The "File Download" dialog box appears.

5. Press the [Save] button.

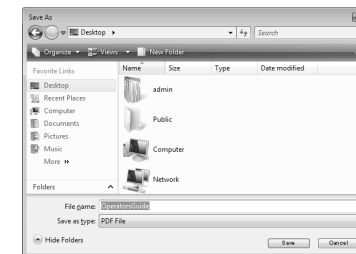


⇒ The "Save As" dialog box appears.



When the [Download Manual] button is pressed, if Adobe® Reader® has not been installed, and the [Open] button on the "File Download" dialog box is pressed, a "Connection error" will occur.

6. Select a folder and enter a file name.



7. Press the [Save] button.

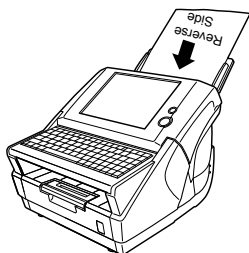
⇒ The file is saved.

Next, perform a scan test.

# Chapter 6 Performing a Scan Test

Perform a scan test to determine if the scanner is working properly. Login as a regular user to perform the scan test.

1. Load the documents to be test scanned.



⇒ The "Login" screen appears.

However, if the scanner is setup for automatic login, the "Login" screen is not shown.

Proceed to Step 4.

2. On the "Login" screen, enter a "User Name" and "Password".

Enter "guest" for the User Name and Password fields.



User Name :

Password :



3. Press the [Login] button.

⇒ If the user name and password are valid, the "Main Menu" screen appears.

4. Select the [Maintenance] button on the "Main Menu" screen.



5. Press the [Scan Test] button.



⇒ The scan settings information for the scan test is displayed.

6. Press the [Scan] button.



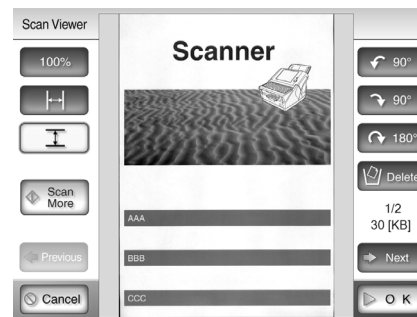
Load a test page and press the [Scan] button.  
 ■ Scan Settings Used ■

Option	Setting	Option	Setting
Color Mode	Auto	Sharpness	Off
Paper Size	Auto	Dropout Color	Off
Resolution	200dpi	Background Removal	Medium
Scan Mode	Duplex	Page Orientation	Off
Compression	Medium	Blank Page Skip	Off
Brightness	Medium	Multifeed Setup	Ultrasonic
Contrast	Medium	Edge Cropping	Off



⇒ Scanning starts. When the scan has completed, the "Scan Viewer" opens.

7. Check the scanned data.



8. Press the [OK] button.

⇒ The "Maintenance" screen is shown again.

## ■ If Scanning Completes Successfully

Continue with the setting procedures described in Chapter 1 of the "Operator's Guide".



To disable login with a guest account, select [Off] for "Guest Account" in the [System Settings] screen on the [Login Settings] tab.



System settings or user data can be backed up from the [User Data Store] or [System Settings File] screen on the [Maintenance] tab. This can only be performed via the network interface. Backup should be performed regularly. This can only be performed via the network interface using the Admin Tool or Central Admin Console.

For more details, refer to the "Operator's Guide".

## ■ If Scanning does not Complete Successfully

If the top cover is open

- Message  
Top cover may be open. Close the top cover, reload the documents and try again.
- Action  
Close the top cover, and try the scan test again.

If no document is loaded

- Message  
Document not found. Load a document into the ADF, making sure the side guides are adjusted correctly and try again.
- Action  
Load a document, and try the scan test again.

If a multifeed is detected

- Message  
Feed Error: Document(s) may not match the test paper size, ADF may have grabbed more than one sheet, or documents may not be suitable for scanning. Remove the documents from the ADF, check them and try again. If problem persists, consult the manual.
- Action  
Remove the document for which multifeed was detected, and try the scan test again.

If a paper jam occurs

- Message  
Paper jam has occurred. Remove the documents from the ADF and try again.
- Action  
If the "Scan Viewer" screen appears with partially scanned data, just click the [OK] button. Remove any unscanned documents from the ADF. Open the scanner's top cover, remove the jammed document from the scanner, and close the scanner's top cover. From the "Maintenance" screen, try the test scan again.

If a problem is detected with the scanner

- Message  
Scanner initialization has failed. Try turning the power off and back on again. The administrator should contact the FUJITSU scanner dealer or an authorized FUJITSU scanner service provider for help.
- Action  
Try the following:
  - If the scanner does not restart automatically, press the [Shutdown] button on the "Login" screen to turn the power off, and turn the power back on again to restart the scanner.
  - If the error status persists after the scanner is restarted, press the [Shutdown] button on the "Login" screen, disconnect the AC cable from the scanner to turn the power off, wait for at least ten seconds, then reconnect the AC cable and try turning the power back on again. If the error status persists, contact your FUJITSU scanner dealer or an authorized FUJITSU scanner service provider.

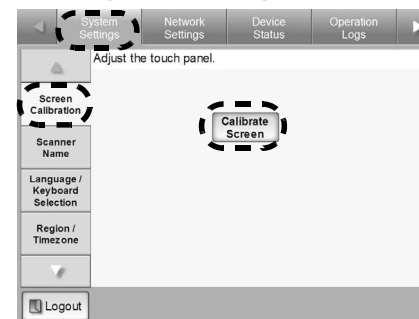
If some other error occurs

- **Message**  
An error has occurred. Try turning the power off and back on again. The administrator should contact the FUJITSU scanner dealer or an authorized FUJITSU scanner service provider for help. [alphanumeric eight digits]
- **Action**  
Try the following:
  - If the scanner does not restart automatically, press the [Shutdown] button on the "Login" screen to turn the power off, and turn the power back on again to restart the scanner.
  - If the error status persists after the scanner is restarted, press the [Shutdown] button on the "Login" screen, disconnect the AC cable from the scanner to turn the power off, wait for at least ten seconds, then reconnect the AC cable and try turning the power back on again. If the error status persists, contact your FUJITSU scanner dealer or an authorized FUJITSU scanner service provider.

## Appendix A Calibrating the Touch Panel

This should be done if and when the touch panel responses seem out of alignment with the positions of objects on the LCD screen.

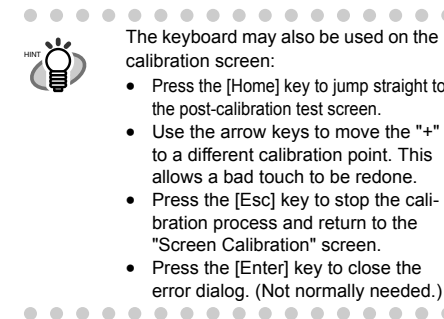
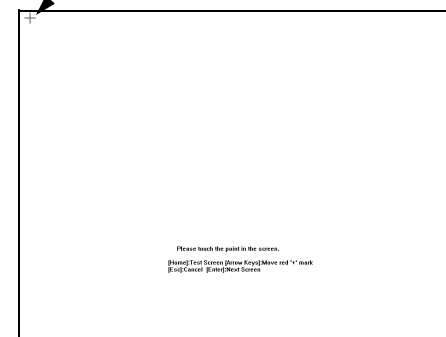
1. Login as the administrator.  
For details, refer to "3.1 Logging in" (page 6).  
⇒ The "System Settings" screen appears.
2. Select the [System Settings] tab on the top menu.
3. Select the [Screen Calibration] tab on the left side menu.  
⇒ The "Calibration Screen" appears.
4. Press the [Calibrate Screen] button.



⇒ A blank calibration screen appears, with a red "+" (adjustment mark) in the top-left corner.

5. Touch the "+" with your fingertip.

After being touched, the "+" will move to the next calibration position. Each time it stops, touch it again.



The keyboard may also be used on the calibration screen:

- Press the [Home] key to jump straight to the post-calibration test screen.
- Use the arrow keys to move the "+" to a different calibration point. This allows a bad touch to be redone.
- Press the [Esc] key to stop the calibration process and return to the "Screen Calibration" screen.
- Press the [Enter] key to close the error dialog. (Not normally needed.)



Repeat until the test screen appears, with the following "Calibration" dialog box:



6. Trace a line on the screen with your fingertip.  
⇒ A corresponding line will appear on-screen. If the line does not appear correctly, press the [Calib screen] button to return to Step 5. If the screen becomes cluttered, press the [CLR screen] button to remove all the lines. The [Cursor on/off] button cannot be used.
7. When you are satisfied with the touch screen response, press the [Update] button.  
⇒ This saves the current calibration data, completing the calibration process, and returns you to the "Screen Calibration" screen.



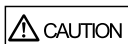
If the calibration is not performed carefully, or the [Enter] key is pressed before all the calibration points have been touched, the following error message may appear:

Parameter Error. Please input, again

Press the [Enter] key to dismiss the error dialog, and perform the calibration again, being careful to touch each calibration point accurately.



## Appendix B Scanner Care



The glass scanner windows inside the ADF can become hot when the scanner is used. Before cleaning inside the scanner or replacing any parts, turn off the power, unplug the AC adapter from the outlet, and wait for at least 15 minutes. The power does not need to be turned off when cleaning the feed rollers.



Do not use any aerosol sprays or alcohol based sprays to clean the scanner. Dust blown up by strong air from the spray may enter the inside of the scanner. This may cause the scanner to fail or malfunction. Sparks, caused by static electricity, generated when blowing off dust and dirt from the outside of the scanner may cause a fire.



### ■ Cleaning Materials

Cleaning Materials	Part No.	Remarks
Cleaner F1	PA03950-0352	1 bottle Used to moisten the cloths before wiping parts clean.
Cleaning Paper	CA99501-0012	1 pack (10 sheets) For use with Cleaner F1.
Cleaning Wipe	PA03950-0419	1 pack (24 sheets) Pre-moistened with Cleaner F1, Cleaning Wipes are used instead of moistened cloths.
Soft, dry cloth	Any commercially available lint-free product	

Contact your FUJITSU scanner dealer or an authorized FUJITSU scanner service provider to obtain these products.

### ■ Which Parts and When

Clean all parts after every 1,000 sheets scanned.

- Pad assembly
- Feed rollers
- Pick roller
- Idler rollers
- Glass scanner windows
- Ultrasonic sensor



The scanner must be cleaned more frequently when the following types of documents are used:

- Coated paper
- Documents with large areas of printing
- Chemically treated paper such as carbonless paper
- Paper containing large amounts of calcium carbonate filler
- Documents written in pencil
- Documents with insufficiently fused toner

For more details, refer to the "Operator's Guide".

### ■ Cleaning the ADF

Clean the ADF with a soft cloth moistened with Cleaner F1. For details, refer to the "Operator's Guide".

### ■ Cleaning the LCD Touch Panel

To prevent the touch panel screen from becoming dirty, it should be regularly cleaned with a soft, dry cloth. Take care when cleaning the touch panel. It can be easily damaged, and should never be scratched or banged with hard objects.



Always use a dry (not damp) cloth to clean the screen. Do not apply Cleaner F1. If dust is allowed to collect and harden around the frame of the screen, it can cause the touch panel to malfunction.

### ■ Cleaning the Keyboard/Keyboard Cover

To prevent the keyboard (and / or keyboard cover) from becoming dirty, it should also be regularly cleaned with a soft, dry cloth.



Always use a dry (not damp) cloth to clean the keyboard (with or without cover). Do not apply Cleaner F1. Replace the keyboard cover if stains cannot be removed by cleaning. For more details, refer to the "Operator's Guide".

To obtain a keyboard cover, contact your FUJITSU dealer or an authorized FUJITSU scanner service provider.

Part Name	Part No.	Remarks
Keyboard cover	PA03544-K608	1 cover GBR: English (UK)

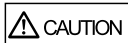
### ■ Cleaning the Carrier Sheet

If the surface or interior of the carrier sheet becomes dirty or dusty, use a soft dry cloth slightly moistened with Cleaner F1 (sold separately) or a mild detergent, to lightly wipe off the dirt and dust.



- Never use paint thinner or other organic solvents.
- Do not rub too hard, as the carrier sheet may become scratched or deformed.
- After cleaning the interior of the carrier sheet, wait until it has completely dried before closing it.
- As a guideline, it is recommended to replace the carrier sheet every 500 scans.

# Appendix C Replacing Parts



The glass scanner windows inside the ADF can become hot when the scanner is used.

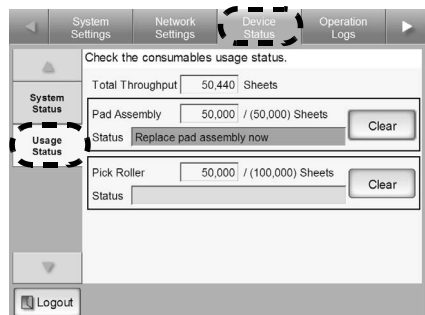


Before cleaning inside the scanner or replacing any parts, turn off the power, unplug the AC adapter from the outlet, and wait for at least 15 minutes.



## Part No. and Replacement Cycle for Consumable Parts

The usage count of consumable parts can be checked in the "Usage Status" screen on the [Device Status] tab.

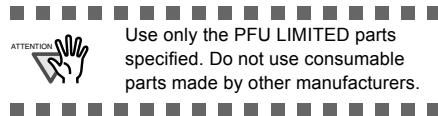


When parts need to be replaced soon, the "Status" information field becomes orange. When parts need to be replaced immediately, the "Status" information field becomes red.

The following table specifies the replacement part numbers and the standard replacement cycles.

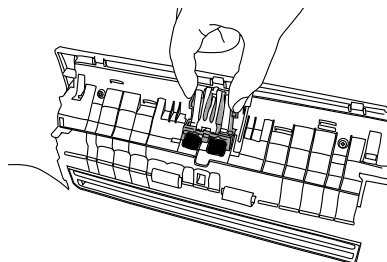
Part Name	Replacement Cycle
Pad assembly (Pad ASSY) (PA03289-0111)	After every 50,000 sheets scanned or once a year
Pick roller (PA03289-0001)	After every 100,000 sheets scanned or once a year

To obtain these parts, contact your FUJITSU dealer or an authorized FUJITSU scanner service provider. These replacement cycles are rough guidelines when using 64 g/m<sup>2</sup> (17 lb) A4/Letter woodfree or wood-containing paper. They may vary according to the type of documents scanned, scanner usage, and cleaning frequency.

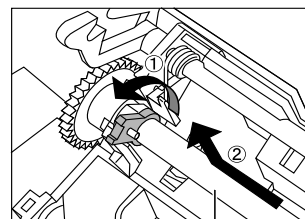
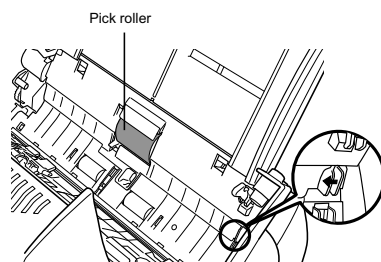


The following diagram shows the locations of the consumable parts in the scanner. For more details, refer to the "Operator's Guide".

## Pad Assembly (PAD ASSY)



## Pick Roller



Pick roller's shaft

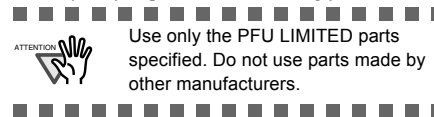
## Part No. and Replacement Cycle for Carrier Sheet

One "Carrier Sheet" is provided with the scanner. If the "Carrier Sheet" provided with the scanner can no longer be used for scanning due to damage or wear-and-tear, you can purchase a new Carrier Sheet separately. The following table specifies the replacement number and the standard replacement cycle for carrier sheets.

Part Name	No. of items	Replacement Cycle
Carrier Sheet (PA03360-0013)	5	After used for 500 scans

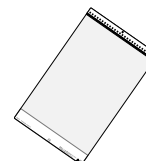
Contact your FUJITSU scanner dealer or an authorized FUJITSU scanner service provider to obtain these products.

This replacement cycle is a rough guideline. This may vary according to the type of documents scanned, scanner usage, and cleaning frequency. If parts become noticeably dirty, replace them accordingly.



The following diagram shows the Carrier Sheet. For more details, refer to the "Operator's Guide".

## Carrier Sheet





## Appendix D Network Connection Troubleshooting

### ■ Checking Basic Network Operation with a Ping Test

If a network connection is not possible, refer to "3.9 Checking the Network Connection" (page 11) for ping results and how to deal with them.

Result	Connection status	Server name setting	Action
"Ping statistics" shows "Lost=0 (0% loss)"	OK	IP address / host name / FQDN	None
"Ping statistics" shows "Lost=4 (100% loss)"	NG	IP address / host name / FQDN	Check that the ping target IP address, host name, or FQDN is correct.
		IP Address	If the ping target IP address is correct, refer to "Failure to Connect to a Server using its IP Address" (page 24) for further solutions.
		Host name / FQDN	On the "Network Status" screen, change [Link speed / Duplex mode] from "Auto-Negotiation" to a fixed mode. This can be changed as follows: <ol style="list-style-type: none"> <li>1. Select the [Network Settings] tab on the top menu.</li> <li>2. Press the [▽] button on the left side menu.</li> <li>3. Select the [Network Status] tab on the left side menu.</li> <li>4. On the "Network Status" screen, select [Link Speed/ Duplex Mode].</li> <li>5. Press the [OK] button.</li> </ol>
"Ping statistics" shows "Lost=N (1 to 99% loss)"	NG	IP address / host name / FQDN	There may be a problem with the quality of the LAN cable. Replace the LAN cable and try again.
		IP address / host name / FQDN	On the "Network Status" screen, change [Link speed / Duplex mode] from "Auto-Negotiation" to a fixed mode. This can be changed as follows: <ol style="list-style-type: none"> <li>1. Select the [Network Settings] tab on the top menu.</li> <li>2. Press the [▽] button on the left side menu.</li> <li>3. Select the [Network Status] tab on the left side menu.</li> <li>4. On the "Network Status" screen, select [Link Speed/ Duplex Mode].</li> <li>5. Press the [OK] button.</li> </ol>
"Hardware error"	NG	IP address / host name / FQDN	The LAN cable may have become disconnected during the Ping test. Check the status of the LAN cable and try again.
"Ping request could not find host xxxxxxxx. Please check the name and try again."	NG	Host name / FQDN	Check that the ping target host name or FQDN is correct.
			Check that the DNS server or WINS server settings are correct.
			If the ping target host name or FQDN is correct, refer to "Failure to Connect to a Server using its Host Name or FQDN" (page 25) for further solutions.

OK: Connection is operating normally. NG: Connection is faulty.

### ■ Failure to Connect to a Server using its IP Address

If a server cannot be connected to by using its IP address, and does not respond to a ping test, try the following steps:

No.	Problem	Action
1	Connection error between a server and the scanner, or problem with the LAN cable.	Check that the LAN cable has been attached to both the scanner and server correctly. If the server is connected using a LAN cable (straight type), in case auto-mdi (automatic selection) is not supported, a LAN cable (crossover type), switch, or router is required between the scanner and server. If this is not the case, the LAN cable may be faulty. Find a LAN cable that functions normally and try again.
2	IP address or subnet mask is invalid.	On the "IP Address" screen, check that the IP address or subnet mask settings are correct. For more details about the "IP Address" screen, refer to "3.5 Setting the IP Address/DHCP" (page 8).
3	When using DHCP, the DHCP server does not operate normally, or there is a problem with the DHCP server settings.	Check the DHCP server connection status and the details of the server settings. If using DHCP, on the "Network Status" screen, check that IP address, subnet mask, and default gateway settings are all correct. If these settings are not correct, the DHCP server may not operate normally, or the DHCP server may not assign valid IP addresses because of restricted number of leases or MAC address validation. If the DHCP server operating environment is changed, restart the scanner. The "Network Status" screen can be displayed as follows: <ol style="list-style-type: none"> <li>1. Select the [Network Settings] tab on the top menu.</li> <li>2. Press the [▽] button on the left side menu.</li> <li>3. Select the [Network Status] tab on the left side menu.</li> </ol>
4	Another host or communication device is connected using the same IP address as the scanner.	If the same IP address has already been used by another host or communication device, then even if the other device has been given a different IP address the server may not recognize the scanner's "duplicate" IP address until it is rebooted. Restart the server. If a duplicate IP address connection from another host or communication device exists on a LAN, both it will be unusable. If a duplicate IP address connection from another host or communication device exists, pull out its LAN cable and restart the server.
5	Access is denied due to the establishment of a firewall between the server and the scanner.	If a firewall has been established between the server and the scanner, check that it has not been set to deny access to the network.

No.	Problem	Action
6	The network link speed/duplex mode for the scanner and server are invalid, or Auto-Negotiation is not supported by the server.	<p>For this scanner, the default [Link Speed/Duplex Mode] setting is "Auto-Negotiation".</p> <p>On the "Network Status" screen, match the scanner and server's network link speed/duplex mode settings.</p> <p>If the problem persists in spite of having set both the scanner and server's network link speed/duplex settings to "Auto-Negotiation", change "Auto-Negotiation" to a fixed mode and check again.</p> <p>On the "Network Status" screen, change [Link speed / Duplex mode] from "Auto-Negotiation" to a fixed mode.</p> <p>This can be changed as follows:</p> <ol style="list-style-type: none"> <li>1. Select the [Network Settings] tab on the top menu.</li> <li>2. Press the [▽] button on the left side menu.</li> <li>3. Select the [Network Status] tab on the left side menu.</li> <li>4. On the "Network Status" screen, select [Link Speed/Duplex Mode].</li> <li>5. Press the [OK] button.</li> </ol>

### ■ Failure to Connect to a Server using its Host Name or FQDN

If a server cannot be connected to by using its host name or FQDN, and does not respond to a ping test, try the following steps:

No.	Problem	Action
1	Same as in "Failure to Connect to a Server using its IP Address" (page 24).	Check if a network connection is possible by trying the same solution for "Failure to Connect to a Server using its IP Address" (page 24).
2	The scanner's DNS server or WINS server settings are invalid.	Check that the DNS and WINS server settings are correct.
3	The DNS server or WINS server is not functioning normally, or there is an error with the DNS or WINS server network connection.	<p>Ping the DNS and WINS servers to check they are functioning normally.</p> <p>If the DNS or WINS server is not functioning, request the network administrator to check its status.</p>


### ■ Failure to Access the Scanner using a Web Browser, Admin Tool, or Central Admin Server

If access is not possible when attempting to connect to the scanner using a Web browser or the Admin Tool, or when attempting to connect to the Central Admin Server from the Central Admin Console, try the following steps:

No.	Problem	Action
1	Same as in "Failure to Connect to a Server using its IP Address" (page 24).	Check if a network connection is possible by trying the same solution for "Failure to Connect to a Server using its IP Address" (page 24).
2	The DNS server or WINS server is not functioning normally, or the scanner name has not been registered in the DHCP or WINS server.	<p>Check the connectivity of the specified IP address.</p> <p>If it is possible to connect the scanner using the Admin Tool with a specified IP address, specify the scanner's IP address in the DNS or WINS server. Also, check the DNS or WINS server settings on the Admin Tool or Web browser.</p>

No.	Problem	Action
3	A misconfigured firewall between the Admin Tool or Web browser and the scanner, is denying access with HTTP/HTTPS protocol.	If there is a firewall between the computer running the Admin Tool or Web browser and the scanner, check that its settings are not preventing access.
4	The URL of the target scanner is not registered as a trusted site.	Set the scanner URL as a trusted site for Internet Explorer. In Microsoft® Internet Explorer, set the following settings in the "Tools" menu, "Internet Options". In the [Security] tab, select [Trusted sites]. Press the [Sites] button, enter the URL of the scanner in the "Add this website to the zone" field, and press the [Add] button.
5	In Microsoft® Internet Explorer, in the "Tools" menu, "Internet Options", [Security] tab, the security level for the corresponding zone is set as "High", or in [Custom level], "Scripting", "Active scripting" is set to "Prompt" or "Disable".	<p>When connecting using the scanner name, the connection will be an intranet connection. When connecting using an IP address, it will be an internet connection.</p> <p>In Microsoft® Internet Explorer, in the "Tools" menu, "Internet Options", try the following settings for the corresponding zone.</p> <ul style="list-style-type: none"> <li>• To enable "Active scripting", set in one of the following ways: <ul style="list-style-type: none"> <li>• In the [Security] tab, set the required "Security level for this zone" to "Medium".</li> <li>• In the [Security] tab, click the [Custom level] button. Then, set the "Scripting", "Active scripting" to "Enable".</li> </ul> </li> <li>• If connecting via the Internet zone, on the [Privacy] tab, set the level to below "Medium High".</li> </ul> <p>After the above settings have been performed, in "Temporary Internet Files" or "Browsing history", press the [Delete cookies] button to delete all temporary internet files.</p>
6	The scanner is in standby mode.	Press the startup button to start the scanner.
7	A proxy server is being used.	Set the proxy server to not be used. Open the "Internet Options" in the "Tools" menu of Microsoft® Internet Explorer, then press the [LAN settings] button in the [Connections] tab and remove the check from the "Use a proxy server for your LAN (These settings will not apply to dial-up or VPN connections)" option.
8	There is an error with the connection protocol setting.	Check if SSL is enabled on the "Admin Network" screen. For more details, refer to "3.6 Setting the Admin Network" (page 9).
9	There is an error with the port number setting.	Check the specified port number on the "Admin Network" screen. For more details, refer to "3.6 Setting the Admin Network" (page 9).
10	In the Microsoft® Internet Explorer, "Tools" menu - "Internet Options" - [Advanced] tab, the [Use SSL 3.0] checkbox under "Settings" - "Security" section is not selected.	Open the "Internet Options" in the "Tools" menu of Microsoft® Internet Explorer, then press the [Advanced] tab, "Settings" - "Security" section, select the "Use SSL 3.0" checkbox.

## Appendix E Troubleshooting

Problem	Check Item	Suggestion
Scanner cannot be turned on.	Has the Startup button been pressed?	Press the Startup button.
	Are the AC cable and AC adapter properly connected to the scanner?	Connect the AC cable and the AC adapter. Disconnect the AC cable from the scanner, wait at least ten seconds, then reattach the cable and turn the power back on again. If the problem persists, contact your FUJITSU scanner dealer or an authorized FUJITSU scanner service provider.
Scanning does not start.	Has the document been loaded correctly into the ADF paper chute?	Reload the documents into the ADF paper chute.
	Is the ADF completely closed?	Close the top cover completely.
	Does the same problem occur after turning the scanner power off and back on again, and re-logging in?	Disconnect the AC cable from the scanner, wait at least ten seconds, then reattach the cable and turn the power back on again. If the problem persists, contact your FUJITSU scanner dealer or an authorized FUJITSU scanner service provider.
Even after pressing the top cover [SCAN] button, scanning does not start.	 Is the button displayed on the touch panel?	The top cover [SCAN] button can only be used on the following screens. <ul style="list-style-type: none"> <li>• "Send e-Mail" screen</li> <li>• "Send Fax" screen</li> <li>• "Print" screen</li> <li>• "Save" screen</li> <li>• "Scan Viewer" screen</li> <li>• "Scan Test" screen</li> <li>• "Message Screen"</li> </ul>
Multifeed errors occur frequently.	Do the documents satisfy the required quality conditions?	Use documents which satisfy the quality conditions. For more details, refer to the "Operator's Guide".
	Has the document been loaded correctly into the ADF paper chute?	Riffle and realign the document stack, then load it back into the ADF paper chute.
	Is the document stack more than 5 mm thick?	Remove sheets from the stack to reduce it to a thickness of 5mm or less.
	Is the pad assembly dirty?	Clean the pad assembly. For more details, refer to the "Operator's Guide".
	Is the pad assembly worn out?	Replace the pad assembly. For more details, refer to the "Operator's Guide".
Paper is not fed into the scanner. (Pick errors are frequent or document feed stops midway)	Do the documents satisfy the required quality conditions?	Use documents which satisfy the quality conditions. For more details, refer to the "Operator's Guide".
	Is the pick roller dirty?	Clean the pick roller. For more details, refer to the "Operator's Guide".
	Is the pick roller worn out?	Replace the pick roller. For more details, refer to the "Operator's Guide".
	Is there any foreign matter in the document feed path?	Clean the document feed path.
Scanned data is elongated.	Are the feed rollers dirty?	Clean the feed rollers. For more details, refer to the "Operator's Guide".
Shadow on the leading edge of the scanned data.	Are the feed rollers dirty?	Clean the feed rollers. For more details, refer to the "Operator's Guide".
Vertical line on the scanned data.	Are the glass scanner windows dirty?	Clean the glass scanner windows. For more details, refer to the "Operator's Guide".

Problem	Check Item	Suggestion
Scanned data appears skewed or distorted.	Has the document been loaded correctly?	Load the document correctly.
Quality of scanned data is poor.	Are the glass scanner windows dirty?	Clean the glass scanner windows.
Cannot login with administrator password.	Was the Caps Lock on when the password was entered?	Turn off the Caps Lock and try logging in again. If the password has been lost or forgotten, contact your FUJITSU scanner dealer or an authorized FUJITSU scanner service provider.
The "Keyboard error or not keyboard present" message is shown on the screen, the scanner does not startup.	After turning the scanner off, was the power turned back on again immediately?	Disconnect the AC cable from the scanner, wait at least ten seconds, then reattach the cable and turn the power back on again. If the problem persists, contact your FUJITSU scanner dealer or an authorized FUJITSU scanner service provider.
Input field entry entered via the keyboard does not appear on the screen.	Has the input field been selected?	Select the input field and try again.
		Press the [Cancel] button and try again.
		To use the touch panel, touch the input field directly and try again
Saving is not possible after pressing [Save] on the "File Download" dialog box.	Does the length of the "Save As" folder path (folder path plus file name) exceed 259 characters?	Select a "Save As" folder that respects the limit.
Status screen stops at "Printing scan data to...".	Is there enough free space in the drive on which the spool folder for the print server exists.	Make sure that there is enough space in the drive.
No response from pressing tab or enter key after a file download operation has been selected via the network interface or the download process does not start.	Has the [Download], [Get CSV] or [Backup] button been selected?	Try pressing a different tab or button on the screen.
An error occurs when installing an Admin Tool.	Is an Admin Tool of another language already installed?	Uninstall the existing Admin Tool, and try again.
The login screen is not displayed when connecting via the network.	Are the SSL settings correct?	Close the screen, correct the settings, and try connecting again.
	Was the [Yes] button selected on the "Security Warning" dialog box when connecting with HTTPS?	Close the screen and try connecting again. Select the [Yes] button on the "Security Warning" dialog box when connecting.

# Copyright

## NetAdvantage 2007

Copyright 2000-2007 Infragistics, Inc.

## LEADTOOLS for .NET

Copyright© 2005 LEAD Technologies, Inc.

## WinPcap3.1

Copyright © 1999 - 2005 NetGroup, Politecnico di Torino (Italy).  
Copyright © 2005 - 2006 CACE Technologies, Davis (California).  
All rights reserved.

Redistribution and use in source and binary forms, with or without modification, are permitted provided that the following conditions are met:

1. Redistributions of source code must retain the above copyright notice, this list of conditions and the following disclaimer.
2. Redistributions in binary form must reproduce the above copyright notice, this list of conditions and the following disclaimer in the documentation and/or other materials provided with the distribution.
3. Neither the name of the Politecnico di Torino, CACE Technologies nor the names of its contributors may be used to endorse or promote products derived from this software without specific prior written permission.

THIS SOFTWARE IS PROVIDED BY THE COPYRIGHT HOLDERS AND CONTRIBUTORS "AS IS" AND ANY EXPRESS OR IMPLIED WARRANTIES, INCLUDING, BUT NOT LIMITED TO, THE IMPLIED WARRANTIES OF MERCHANTABILITY AND FITNESS FOR A PARTICULAR PURPOSE ARE DISCLAIMED. IN NO EVENT SHALL THE COPYRIGHT OWNER OR CONTRIBUTORS BE LIABLE FOR ANY DIRECT, INDIRECT, INCIDENTAL, SPECIAL, EXEMPLARY, OR CONSEQUENTIAL DAMAGES (INCLUDING, BUT NOT LIMITED TO, PROCUREMENT OF SUBSTITUTE GOODS OR SERVICES; LOSS OF USE, DATA, OR PROFITS; OR BUSINESS INTERRUPTION) HOWEVER CAUSED AND ON ANY THEORY OF LIABILITY, WHETHER IN CONTRACT, STRICT LIABILITY, OR TORT (INCLUDING NEGLIGENCE OR OTHERWISE) ARISING IN ANY WAY OUT OF THE USE OF THIS SOFTWARE, EVEN IF ADVISED OF THE POSSIBILITY OF SUCH DAMAGE.

This product includes software developed by the University of California, Lawrence Berkeley Laboratory and its contributors.  
This product includes software developed by the Kungliga Tekniska Hogskolan and its contributors.  
This product includes software developed by Yen Yen Lim and North Dakota State University.

Portions Copyright © 1990, 1991, 1992, 1993, 1994, 1995, 1996, 1997 The Regents of the University of California.  
All rights reserved.

Redistribution and use in source and binary forms, with or without modification, are permitted provided that the following conditions are met:

1. Redistributions of source code must retain the above copyright notice, this list of conditions and the following disclaimer.
2. Redistributions in binary form must reproduce the above copyright notice, this list of conditions and the following disclaimer in the documentation and/or other materials provided with the distribution.
3. All advertising materials mentioning features or use of this software must display the following acknowledgement: "This product includes software developed by the University of California, Berkeley and its contributors."
4. Neither the name of the University nor the names of its contributors may be used to endorse or promote products derived from this software without specific prior written permission.

THIS SOFTWARE IS PROVIDED BY THE INSTITUTE AND CONTRIBUTORS "AS IS" AND ANY EXPRESS OR IMPLIED WARRANTIES, INCLUDING, BUT NOT LIMITED TO, THE IMPLIED WARRANTIES OF MERCHANTABILITY AND FITNESS FOR A PARTICULAR PURPOSE ARE DISCLAIMED. IN NO EVENT SHALL THE REGENTS OR CONTRIBUTORS BE LIABLE FOR ANY DIRECT, INDIRECT, INCIDENTAL, SPECIAL, EXEMPLARY, OR CONSEQUENTIAL DAMAGES (INCLUDING, BUT NOT LIMITED TO, PROCUREMENT OF SUBSTITUTE GOODS OR SERVICES; LOSS OF USE, DATA, OR PROFITS; OR BUSINESS INTERRUPTION) HOWEVER CAUSED AND ON ANY THEORY OF LIABILITY, WHETHER IN CONTRACT, STRICT LIABILITY, OR TORT (INCLUDING NEGLIGENCE OR OTHERWISE) ARISING IN ANY WAY OUT OF THE USE OF THIS SOFTWARE, EVEN IF ADVISED OF THE POSSIBILITY OF SUCH DAMAGE.

Portions Copyright © 1983 Regents of the University of California.  
All rights reserved.

Redistribution and use in source and binary forms are permitted provided that the above copyright notice and this paragraph are duplicated in all such forms and that any documentation, advertising materials, and other materials related to such distribution and use acknowledge that the software was developed by the University of California, Berkeley. The name of the University may not be used to endorse or promote products derived from this software without specific prior written permission.

THIS SOFTWARE IS PROVIDED "AS IS" AND WITHOUT ANY EXPRESS OR IMPLIED WARRANTIES, INCLUDING, WITHOUT LIMITATION, THE IMPLIED WARRANTIES OF MERCHANTABILITY AND FITNESS FOR A PARTICULAR PURPOSE.

Portions Copyright © 1995, 1996, 1997 Kungliga Tekniska Hogskolan (Royal Institute of Technology, Stockholm, Sweden). All rights reserved.

Redistribution and use in source and binary forms, with or without modification, are permitted provided that the following conditions are met:

1. Redistributions of source code must retain the above copyright notice, this list of conditions and the following disclaimer.

2. Redistributions in binary form must reproduce the above copyright notice, this list of conditions and the following disclaimer in the documentation and/or other materials provided with the distribution.
3. All advertising materials mentioning features or use of this software must display the following acknowledgement: "This product includes software developed by the Kungliga Tekniska Hogskolan and its contributors."
4. Neither the name of the University nor the names of its contributors may be used to endorse or promote products derived from this software without specific prior written permission.

THIS SOFTWARE IS PROVIDED BY THE INSTITUTE AND CONTRIBUTORS "AS IS" AND ANY EXPRESS OR IMPLIED WARRANTIES, INCLUDING, BUT NOT LIMITED TO, THE IMPLIED WARRANTIES OF MERCHANTABILITY AND FITNESS FOR A PARTICULAR PURPOSE ARE DISCLAIMED. IN NO EVENT SHALL THE INSTITUTE OR CONTRIBUTORS BE LIABLE FOR ANY DIRECT, INDIRECT, INCIDENTAL, SPECIAL, EXEMPLARY, OR CONSEQUENTIAL DAMAGES (INCLUDING, BUT NOT LIMITED TO, PROCUREMENT OF SUBSTITUTE GOODS OR SERVICES; LOSS OF USE, DATA, OR PROFITS; OR BUSINESS INTERRUPTION) HOWEVER CAUSED AND ON ANY THEORY OF LIABILITY, WHETHER IN CONTRACT, STRICT LIABILITY, OR TORT (INCLUDING NEGLIGENCE OR OTHERWISE) ARISING IN ANY WAY OUT OF THE USE OF THIS SOFTWARE, EVEN IF ADVISED OF THE POSSIBILITY OF SUCH DAMAGE.

Portions Copyright © 1997 Yen Yen Lim and North Dakota State University. All rights reserved.

Redistribution and use in source and binary forms, with or without modification, are permitted provided that the following conditions are met:

1. Redistributions of source code must retain the above copyright notice, this list of conditions and the following disclaimer.
2. Redistributions in binary form must reproduce the above copyright notice, this list of conditions and the following disclaimer in the documentation and/or other materials provided with the distribution.
3. All advertising materials mentioning features or use of this software must display the following acknowledgement: "This product includes software developed by Yen Yen Lim and North Dakota State University"
4. The name of the author may not be used to endorse or promote products derived from this software without specific prior written permission.

THIS SOFTWARE IS PROVIDED BY THE AUTHOR "AS IS" AND ANY EXPRESS OR IMPLIED WARRANTIES, INCLUDING, BUT NOT LIMITED TO, THE IMPLIED WARRANTIES OF MERCHANTABILITY AND FITNESS FOR A PARTICULAR PURPOSE ARE DISCLAIMED. IN NO EVENT SHALL THE AUTHOR BE LIABLE FOR ANY DIRECT, INDIRECT, INCIDENTAL, SPECIAL, EXEMPLARY, OR CONSEQUENTIAL DAMAGES (INCLUDING, BUT NOT LIMITED TO, PROCUREMENT OF SUBSTITUTE GOODS OR SERVICES; LOSS OF USE, DATA, OR PROFITS; OR BUSINESS INTERRUPTION) HOWEVER CAUSED AND ON ANY THEORY OF LIABILITY, WHETHER IN CONTRACT, STRICT LIABILITY, OR TORT (INCLUDING NEGLIGENCE OR OTHERWISE) ARISING IN ANY WAY OUT OF THE USE OF THIS SOFTWARE, EVEN IF ADVISED OF THE POSSIBILITY OF SUCH DAMAGE.

Portions Copyright © 1993 by Digital Equipment Corporation.

Permission to use, copy, modify, and distribute this software for any purpose with or without fee is hereby granted, provided that the above copyright notice and this permission notice appear in all copies, and that the name of Digital Equipment Corporation not be used in advertising or publicity pertaining to distribution of the document or software without specific, written prior permission.

THE SOFTWARE IS PROVIDED "AS IS" AND DIGITAL EQUIPMENT CORP. DISCLAIMS ALL WARRANTIES WITH REGARD TO THIS SOFTWARE, INCLUDING ALL IMPLIED WARRANTIES OF MERCHANTABILITY AND FITNESS. IN NO EVENT SHALL DIGITAL EQUIPMENT CORPORATION BE LIABLE FOR ANY SPECIAL, DIRECT, INDIRECT, OR CONSEQUENTIAL DAMAGES OR ANY DAMAGES WHATSOEVER RESULTING FROM LOSS OF USE, DATA OR PROFITS, WHETHER IN AN ACTION OF CONTRACT, NEGLIGENCE OR OTHER TORTIOUS ACTION, ARISING OUT OF OR IN CONNECTION WITH THE USE OR PERFORMANCE OF THIS SOFTWARE.

Portions Copyright © 1995, 1996, 1997, 1998, and 1999 WIDE Project.  
All rights reserved.

Redistribution and use in source and binary forms, with or without modification, are permitted provided that the following conditions are met:

1. Redistributions of source code must retain the above copyright notice, this list of conditions and the following disclaimer.
2. Redistributions in binary form must reproduce the above copyright notice, this list of conditions and the following disclaimer in the documentation and/or other materials provided with the distribution.
3. Neither the name of the project nor the names of its contributors may be used to endorse or promote products derived from this software without specific prior written permission.

THIS SOFTWARE IS PROVIDED BY THE PROJECT AND CONTRIBUTORS "AS IS" AND ANY EXPRESS OR IMPLIED WARRANTIES, INCLUDING, BUT NOT LIMITED TO, THE IMPLIED WARRANTIES OF MERCHANTABILITY AND FITNESS FOR A PARTICULAR PURPOSE ARE DISCLAIMED. IN NO EVENT SHALL THE PROJECT OR CONTRIBUTORS BE LIABLE FOR ANY DIRECT, INDIRECT, INCIDENTAL, SPECIAL, EXEMPLARY, OR CONSEQUENTIAL DAMAGES (INCLUDING, BUT NOT LIMITED TO, PROCUREMENT OF SUBSTITUTE GOODS OR SERVICES; LOSS OF USE, DATA, OR PROFITS; OR BUSINESS INTERRUPTION) HOWEVER CAUSED AND ON ANY THEORY OF LIABILITY, WHETHER IN CONTRACT, STRICT LIABILITY, OR TORT (INCLUDING NEGLIGENCE OR OTHERWISE) ARISING IN ANY WAY OUT OF THE USE OF THIS SOFTWARE, EVEN IF ADVISED OF THE POSSIBILITY OF SUCH DAMAGE.

Portions Copyright © 1996 Juniper Networks, Inc. All rights reserved.

Redistribution and use in source and binary forms, with or without modification, are permitted provided that: (1) source code distributions retain the above copyright notice and this paragraph in its entirety; (2) distributions including binary code include the above copyright notice and this paragraph in its entirety in the documentation or other materials provided with the distribution.

The name of Juniper Networks may not be used to endorse or promote products derived from this software without specific prior written permission.

THIS SOFTWARE IS PROVIDED "AS IS" AND WITHOUT ANY EXPRESS OR IMPLIED WARRANTIES, INCLUDING, WITHOUT LIMITATION, THE IMPLIED WARRANTIES OF MERCHANTABILITY AND FITNESS FOR A PARTICULAR PURPOSE.

Portions Copyright © 2001 Daniel Hartmeier All rights reserved.

Redistribution and use in source and binary forms, with or without modification, are permitted provided that the following conditions are met:

- Redistributions of source code must retain the above copyright notice, this list of conditions and the following disclaimer.
- Redistributions in binary form must reproduce the above copyright notice, this list of conditions and the following disclaimer in the documentation and/or other materials provided with the distribution.

THIS SOFTWARE IS PROVIDED BY THE COPYRIGHT HOLDERS AND CONTRIBUTOR "AS IS" AND ANY EXPRESS OR IMPLIED WARRANTIES, INCLUDING, BUT NOT LIMITED TO, THE IMPLIED WARRANTIES OF MERCHANTABILITY AND FITNESS FOR A PARTICULAR PURPOSE ARE DISCLAIMED. IN NO EVENT SHALL THE COPYRIGHT HOLDERS OR CONTRIBUTORS BE LIABLE FOR ANY DIRECT, INDIRECT, INCIDENTAL, SPECIAL, EXEMPLARY, OR CONSEQUENTIAL DAMAGES (INCLUDING, BUT NOT LIMITED TO, PROCUREMENT OF SUBSTITUTE GOODS OR SERVICES; LOSS OF USE, DATA, OR PROFITS; OR BUSINESS INTERRUPTION) HOWEVER CAUSED AND ON ANY THEORY OF LIABILITY, WHETHER IN CONTRACT, STRICT LIABILITY, OR TORT (INCLUDING NEGLIGENCE OR OTHERWISE) ARISING IN ANY WAY OUT OF THE USE OF THIS SOFTWARE, EVEN IF ADVISED OF THE POSSIBILITY OF SUCH DAMAGE.

Portions Copyright 1989 by Carnegie Mellon.

Permission to use, copy, modify, and distribute this program for any purpose and without fee is hereby granted, provided that this copyright and permission notice appear on all copies and supporting documentation, the name of Carnegie Mellon not be used in advertising or publicity pertaining to distribution of the program without specific prior permission, and notice be given in supporting documentation that copying and distribution is by permission of Carnegie Mellon and Stanford University. Carnegie Mellon makes no representations about the suitability of this software for any purpose. It is provided "as is" without express or implied warranty.

## WinDump3.9.5

Copyright © 1999 - 2005 NetGroup, Politecnico di Torino (Italy).  
Copyright © 2005 - 2006 CACE Technologies, Davis (California).  
All rights reserved.

Redistribution and use in source and binary forms, with or without modification, are permitted provided that the following conditions are met:

1. Redistributions of source code must retain the above copyright notice, this list of conditions and the following disclaimer.

2. Redistributions in binary form must reproduce the above copyright notice, this list of conditions and the following disclaimer in the documentation and/or other materials provided with the distribution.
3. Neither the name of the Politecnico di Torino, CACE Technologies nor the names of its contributors may be used to endorse or promote products derived from this software without specific prior written permission.

THIS SOFTWARE IS PROVIDED BY THE COPYRIGHT HOLDERS AND CONTRIBUTORS "AS IS" AND ANY EXPRESS OR IMPLIED WARRANTIES, INCLUDING, BUT NOT LIMITED TO, THE IMPLIED WARRANTIES OF MERCHANTABILITY AND FITNESS FOR A PARTICULAR PURPOSE ARE DISCLAIMED. IN NO EVENT SHALL THE COPYRIGHT OWNER OR CONTRIBUTORS BE LIABLE FOR ANY DIRECT, INDIRECT, INCIDENTAL, SPECIAL, EXEMPLARY, OR CONSEQUENTIAL DAMAGES (INCLUDING, BUT NOT LIMITED TO, PROCUREMENT OF SUBSTITUTE GOODS OR SERVICES; LOSS OF USE, DATA, OR PROFITS; OR BUSINESS INTERRUPTION) HOWEVER CAUSED AND ON ANY THEORY OF LIABILITY, WHETHER IN CONTRACT, STRICT LIABILITY, OR TORT (INCLUDING NEGLIGENCE OR OTHERWISE) ARISING IN ANY WAY OUT OF THE USE OF THIS SOFTWARE, EVEN IF ADVISED OF THE POSSIBILITY OF SUCH DAMAGE.

This product includes software developed by the University of California, Lawrence Berkeley Laboratory and its contributors.

## Secure iNetSuite 2.0J

Copyright© 2007 Dart Communications

---

## fi-6010N Network Scanner

### Getting Started

#### P3PC-2382-01EN

Date of issuance: July 2008

Issuance responsibility: PFU LIMITED

---

- Copying of the contents of this manual in whole or in part and copying of the scanner application is forbidden under the copyright law.
- The contents of this manual are subject to change without notice.
- PFU LIMITED. is not liable whatsoever for any damages resulting from use of this scanner and procedures described in this manual, profit due to defects, and any claims by a third party.